



**ALPADIA**  
PATHWAYS

# **PATHWAY PROGRAMMES**



**FRANCE · SWITZERLAND · GERMANY**

Pathway Programmes to Studienkollegs, Bachelor's and Master's degrees  
for students and job seeking programmes for international professionals

[www.alpadia.com](http://www.alpadia.com)

Alpadia was sold by Kaplan to Inspirit Capital.

# Get ready for academic and professional success!

With over 20 years of experience in the study abroad industry, Alpadia has been helping international students inspire their future through language immersion. The aim of our pathway programmes is to help international students and professionals make their dreams of studying or working abroad a reality. We provide students with clear routes to higher education and careers abroad.

## Study in Europe

University Pathway Programmes  
University Pathway (bachelor's or master's studies)  
Studienkolleg Preparation in Germany

## Work in Germany

Career Pathway Programme





# UNLOCK A WORLD OF POSSIBILITIES



You've just stepped off a plane, the air filled with unfamiliar sounds and sights. Your heart races with excitement as you realize — this is it. Your language-learning adventure has begun!

At Alpadia, we're not just teaching languages; we're crafting life-changing experiences. For over a century, we've been the storytellers of countless student journeys, each one unique and inspiring. Imagine yourself strolling through charming European streets, confidently ordering coffee in a new language, or sharing laughs with friends from across the globe. This isn't just a daydream — it's the Alpadia experience.

As you enter our school, you're greeted by expert language instructors eagerly awaiting to guide you through your linguistic journey. Our well-trained team of professionals is dedicated to supporting you every step of the way, from grammar challenges to cultural insights. We believe that true language mastery happens beyond textbooks. It's in the vibrant conversations at local markets, the shared meals with your international roommates, and in those magical moments, you realize you're thinking in a new language without even trying.

Every week, our schools become a melting pot of cultures as new faces from around the world join our community. You'll find yourself surrounded by kindred spirits, all eager to explore, learn, and grow together. Remember, this journey is about more than just conjugating verbs. It's about discovering a new version of yourself — one who's more confident, culturally aware, and ready to take on the world.

***Let's embark on this adventure together!***

**Mattias Ysebie**

Operations Director

Click on the  
page numbers  
to navigate to  
each page



# Content

- 5** University Pathway Programme
- 6** Why Choose a University Pathway Programme
- 7** Who is the programme for?
- 8** Where can I study?
- 10** University Pathway in France
- 13** University Pathway in Germany
- 15** What are my study options?
- 16** How does it work?
- 17** Language course and package fees
- 18** Germany Career Pathway Programme for international professionals
- 19** Why choose a Career Pathway Programme?
- 20** Your profile /  
Where can I pursue my career?
- 21** How does it work?
- 21** Language course and package fees
- 23** Student Support Services
- 24** Support upon enrolment
- 25** Support after arrival
- 27** Support at the end of the programme
- 28** Alumni network
- 29** Next Steps

# University Pathway Programme

Take your education further with Alpadia!



“

*I feel confident in my language skills now, and it makes me excited for the future. Therefore, my advice to anyone thinking about applying to Pathways is to just do it. Everyone should experience what it's like to study abroad, and it's never too late to apply. This course has changed my life – now let it change yours.*

**Duygu**

Alpadia Pathways student from Turkey

”

# Why Choose a University Pathway Programme

If you want to pursue a degree abroad, Alpadia serves as a bridge to help you enter a foreign university and make sure you fulfil all requirements. These are the steps you'll take on the programme.

# 1

Once you've completed high school or university studies in your home country, we'll help you gain access to an undergraduate or postgraduate degree at a great university abroad



# 2

If you don't meet the necessary language and/or academic entry requirements for a direct entry to university, our pathway programme will prepare you accordingly



# 3

Study our pathway programme in the country where you will later achieve your degree. The goal of this time before your programme is to learn more about the local culture, integrate academically and, most importantly, improve your language level



# 4

Once the pathway programme ends, you'll enrol in your chosen bachelor's or master's degree at one of your desired universities and carry on with your studies



## Start university fully prepared for the challenges ahead!

The benefits of taking a pathway course are endless. The most important one is being fully prepared for your life and studies abroad. The programme will enable you to get into highly reputed European universities and access excellent tuition. You'll also make lifelong friendships with people from all over the world. Getting a university education is just the beginning. A good degree will open up exciting opportunities for a successful career.

# Who is the *programme for?*

Our University Pathway Programme is designed for international students interested in pursuing a degree in Europe. The programme will help you build your language skills, adjust to living and studying abroad, and give you a better chance of admission to your dream university.



# Where can I study?



## ■ ■ France

France is not only the world's number one tourist destination, it's also a fantastic place to study, offering a multicultural experience and a rich social life. Affordable tuition fees — even for private institutions — mean education is accessible. Depending on the city, the cost of living is also reasonable. France offers vibrant campus cities like Paris, Lyon, Nice and Montpellier to name a few, providing students with a diverse learning experience in some of the most beautiful cities in Europe. As French is the fifth most spoken language in the world, studying in France and learning the language will be a great advantage in your future academic endeavours, career and life.



## ■ Switzerland

Switzerland's most notable strengths include innovation, diversity, precision technology and education. The country ranks high in economic competitiveness, production, human development and standard of living. Not only is Switzerland one of the most attractive places to live in the world, it's also a uniquely multicultural and multilingual place, with four national languages. The breathtaking landscapes, excellent transport links, the generous variety of cultural and leisure activities, along with the superior quality of higher education, all make Switzerland a top location to study in.



## ■ Germany

Germany offers a high standard of living to both its own citizens and ambitious international students. Some of the advantages of studying in Germany — regardless of your nationality — include: almost free-of-charge education at public universities and low cost private universities, work allowance of 20h/week from the moment on you start your course at Alpadia, low living costs, international prospects and an 18-month jobseeker visa upon graduation. It is all these reasons and more that make Germany our most popular destination.



# University Pathway *in France*

- Why choose France for higher education?
- One of the top educational systems in the world
- An exceptional cultural dynamism
- France is at the crossroads of Europe
- Thanks to a network of partnerships between top companies and higher education institutions, studying in France is a career booster
- Graduate with a French degree recognized by the Ministries of Education or Labor



\*Nice does not offer University Pathway in France

## Our Alpadia school in Lyon

<b>Minimum age</b>	16
<b>Language</b>	French
<b>Student capacity</b>	50-100
<b>Classrooms</b>	5

Our school is in the heart of the city's cultural and festive life in Lyon's centre. The beautiful 19th century building is located on the "Presqu'île" (peninsula), overlooking the Rhône and a short walk from the Saône. The school has spacious and bright classrooms with high ceilings.

Only a stone's throw away from the biggest square in Lyon, straight after class you can soak up the atmosphere in the numerous nearby cafés and restaurants, where Lyon's students meet.

The school has direct access to the best pedestrian shopping areas in Lyon and there is a subway station and a bus stop less than five minutes' walk away from the school.



## Our partner schools

All programmes include hands-on training, practical experience and internships. With a unique network of companies and alumni, it is easier for students to find an internship or a job in France.



**10**  
Destinations



**22**  
Schools



**100**  
Programmes



**10 000** Partner  
Companies

## Study Areas

### AGRIBUSINESS

Agribusiness Management, Land Development

### BUSINESS

Business Development, Management, Marketing, Negotiation

### COMMUNICATION

Broadcasting, Digital Communication, Journalism, Strategy

### COMPUTER SCIENCES

E-Commerce, Webmarketing, Web & Mobile App Development

### DESIGN

Fashion & Luxury, Interior Architecture, Interior Design

### ENTREPRENEURSHIP

Management, Social Entrepreneurship

### ENVIRONMENT

Green Economy, Land Development

### FINANCE

Accounting, Corporate Finance

### FOREIGN AFFAIRS

Foreign affairs, Geopolitics, Humanitarian Program, Management

### HUMAN RESOURCES

Human Resources, Management

### TOURISM

Tourism & Hospitality, Management, Tourism Industry

### LAW

Business law, In-house counsel, Law and compliance

## Our dedicated school in Nice ■ ■

<b>Minimum age</b>	16
<b>Language</b>	French
<b>Student capacity</b>	50-100
<b>Classrooms</b>	5

Step into the heart of the French Riviera, where the azure Mediterranean meets the charming streets of Nice. This school is operated by our sister school Azurlingua.

Our school, nestled in the quiet “Les Musiciens” district, is your gateway to an unforgettable experience. Just minutes from the central station, and the iconic beaches, you’ll find yourself immersed in the vibrant French culture from day one. Join our community of over 4,000 annual students and let the sunny French Riviera inspire your best French accent.



## Our partner schools

All programmes include hands-on training, practical experience and internships. With a unique network of companies and alumni, it is easier for students to find an internship or a job in France.



**10**  
Destinations



**22**  
Schools



**100**  
Programmes



**10 000** Partner  
Companies

## Study Areas

### AGRIBUSINESS

Agribusiness Management, Land Development

### BUSINESS

Business Development, Management, Marketing, Negotiation

### COMMUNICATION

Broadcasting, Digital Communication, Journalism, Strategy

### COMPUTER SCIENCES

E-Commerce, Webmarketing, Web & Mobile App Development

### DESIGN

Fashion & Luxury, Interior Architecture, Interior Design

### ENTREPRENEURSHIP

Management, Social Entrepreneurship

### ENVIRONMENT

Green Economy, Land Development

### FINANCE

Accounting, Corporate Finance

### FOREIGN AFFAIRS

Foreign affairs, Geopolitics, Humanitarian Program, Management

### HUMAN RESOURCES

Human Resources, Management

### TOURISM

Tourism & Hospitality, Management, Tourism Industry

### LAW

Business law, In-house counsel, Law and compliance

Accreditations  
& certifications



# University Pathway *in Germany*

## Why choose Germany for higher education?

- 18-month post study work permit
- Easy access to a secure job market
- World-class education & affordable living costs
- Abundance of outstanding courses and universities
- Globally recognised degrees
- Vibrant student life & endless activities on offer



 420+  
Higher education  
Institutes

 100+  
Universities

 9K+  
Bachelor  
programs

 10K+  
Masters  
programs

## Study Areas

### BUSINESS

Business Administration, Management, Marketing, Logistics

### ENGINEERING

Mechanical Engineering, Electronical Engineering, Civil engineering, Industrial Engineering, Mechatronics, Robotics

### IT

Computer Sciences, Computer Engineering, Applied Computer Sciences, Business Informatics, Medical Informatics

### LIFE SCIENCES

(Medicine), Bioinformatics, Biotechnical Chemistry

### MEDIA

Media Informatics, Digital Media many other fantastic study programs of different areas



## Our Alpadia school in Berlin

**Minimum age** 16

**Language** German

**Student capacity** 220-360

**Classrooms** 25

In the Schöneberg district, a stone's throw from the main attractions of the capital, our language school offers students a unique opportunity to attend German classes in one of the most beautiful areas of the city. Many cafés, bars and restaurants can be found along the lively streets of this central district, easily reachable by public transport. From the metro station or the bus stop, you will be two minutes away from the spacious and welcoming premises of our course centre. Along with its large and bright classrooms, equipped with first-class learning facilities, the school has a conference room, an internet café as well as a spacious lounge, where students can meet up during the breaks and buy refreshments.

## Our Alpadia school in Freiburg

**Minimum age** 16

**Language** German

**Student capacity** 120-200

**Classrooms** 15

Founded in 1972, our language school in Freiburg is established in an elegant neoclassical house located in the town centre. Here, you will find a stimulating, multicultural environment, conducive to learning German rapidly.

The course center has comfortable classrooms, a cafeteria as well as a spacious terrace and wonderful garden. After your German classes, set off to discover the city. From the school, you will be close to the university, the numerous shops of the historical centre and its beautiful Gothic cathedral. And if you like to ride bikes, take advantage of the city's 400 kilometres of cycle lanes.

\* Admission restrictions apply.

**Get access to the whole German higher education, any university, any city\***

**Accreditations  
& certifications**

**ACCREDITED**  
  
Eaquals  
Excellence in Language Education

**ÉTUDES  
EN FRANCE**

**CSN**

  
LE MINISTRE DE L'ÉDUCATION  
NATIONALE  
DE L'ENSEIGNEMENT SUPÉRIEUR  
ET DE LA RECHERCHE

**[fla]**  
QUALITÉ  
FRANÇAISE  
FRANÇAIS LANGUE FRANÇAISE

**AL TO** | WHERE  
LEADERS  
MEET

**FRANCE  
ÉDUCATION  
INTERNATIONAL**

# What are my study options in Germany?

## Direct access to university — University Pathway programme



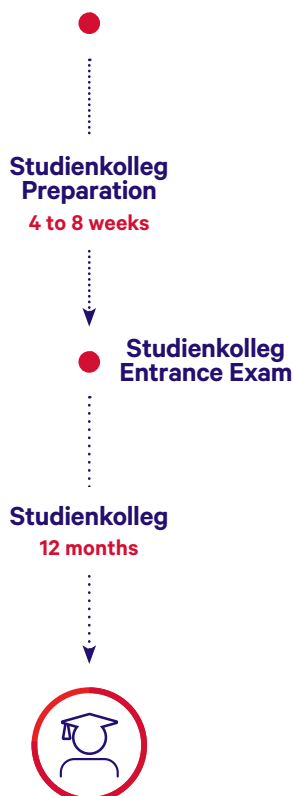
### Bachelor's Degrees

Germany offers a wide range of degree programmes at bachelor's level. In order to be able to directly start your bachelor's studies in Germany you need to have a direct entrance qualification. This depends on your country of origin and your study background. Within the pre-evaluation phase we will precisely check your academic background and take into account your university entrance qualification in order to start your University Pathway in Germany.

### Master's Degrees

With over 10'000 master's degrees offered in more than 400 higher education institutions, Germany has become one of the most attractive destinations for international students to pursue their master's degrees in. Whether your academic background allows you to study at master's level in Germany depends on several factors, including your country of origin, recognition of your university and your degree in Germany, the curriculum of your previous studies, and your Grade Point Average. We will assess your academic background during the pre-evaluation phase of the University Pathway programme.

## Indirect access to university - Studienkolleg preparation



### Studienkolleg

Studienkollegs are public educational institutions in Germany which offer preparatory courses (foundation year courses) for international students hoping to study at a German university. You will need to attend a Studienkolleg before applying to a German university if your secondary school certificate is not recognised as equivalent to the German [Abitur](#). The teaching language in all Studienkollegs is German. Studienkollegs usually have an entry test which always contains German language test at B2/C1 level and includes a mathematics test.

Studienkollegs offer two semesters of preparation for the final exam, called Feststellungsprüfung (FSP) which contains subjects related to your desired field of studies in the future.

Once you have passed the FSP, you can directly apply to your desired study programme at any university in Germany.

### Online prep-course for Studienkolleg

In order to prepare students in the best way possible for the entrance exam of the German foundation year (Studienkolleg), we offer online preparatory courses with the possibility to choose preparation for specific Studienkollegs.

The booking of the prep-course can be processed on-site after choosing the desired Studienkollegs of application and the minimum German level to take the online-prep-course is B1/B2.

# How does it work?



## Pre-evaluation

1 week



## Application & Visa process

approx. 8 - 36 weeks  
varies across countries



## Language courses

16 - 50 weeks



## C1 Exam



## Preparation for entry test<sup>A</sup>

online prep-course  
from level B1/B2 on



## University placement

6-8 weeks



## University entrance

Starting in October or March

### Pre-evaluation process (free-of-charge)

- You'll upload your academic documents and fill out the evaluation form
- We'll get back to you and make sure we have all of the required information and documents
- We'll evaluate your study background along with your academic interests
- You'll receive your personal evaluation results. This will include a timeline and a roadmap outlining the next steps

### Application process (mandatory)

- We'll guide you through the authorisation, translation, notarisation, and submission of your documents
- We'll help you with your applications for university admission
- You'll receive at least on conditional Letter of Acceptance (CLA) or VPD from a university
- You'll receive your suggested study plan

### Visa assistance process (for non-EU applicants)

- We'll guide you through the preparation of your documents for your visa application
- We'll assist you in setting up your blocked-account and health insurance in Germany, France or Switzerland
- You'll apply for the right kind of visa with the necessary set of documents
- You'll receive your study preparatory visa and get ready for joining your pathway programme at our Alpadia schools

### Intensive preparatory language courses — at least 16 weeks

- We'll help you obtain up to C1-Academic German or French certification
- You'll take language classes with us and take official language tests in Berlin, Freiburg, Montreux or Lyon and Nice..
- You'll benefit from our wide selection of accommodation options
- You'll be able to choose from a range of immersive activities and excursions while you're learning German or French
- You'll receive student support and academic counselling from our team
- You'll learn a language with likeminded international applicants, make lifelong friendships and exchange information regarding your study options in Germany, France or Switzerland
- You'll begin to integrate into a different culture and visit your desired universities/cities to shortlist your options

### University placement process (optional)

- We'll evaluate your chances of getting a place in the field of study at your desired universities/Studienkollegs (Germany only)
- We'll assist you with shortlisting the programmes based on your personal goals, admission criteria, deadlines, location and more
- We'll help you with preparing your documents including your CV and personal statement
- We'll assist you with notarising the copy of your original documents
- We'll proceed your application for up to three different universities or Studienkollegs
- Once you received an admission offer of a university or passed the entrance exam to Studienkolleg we'll help to enrol and assist to arrange your national public health insurance, apply for a new residence permit and obtain student status and a student visa

<sup>A</sup> For intake winter semester in October, for intake summer semester in March

# Language course and package fees

## University Pathway

20 or 25 lessons per week

**Minimum age** 16

**Levels** Beginner to advanced A1\* > C1

**Duration** 16 - 50 weeks  
(for more details, see tables on next page)

**Start dates** Every Monday, year-round

## Programme

### University 20: U20

Our University 20 courses are an excellent choice if you want to improve your general linguistic communication skills and still have free time on your hands.

### University 25: U25

The University 25 offers a more in-depth study of the language thanks to five additional lessons per week. The University 25 offers a more in-depth study of the language thanks to five additional lessons per week. These Language In Action workshops are designed to bring your language learning to life through practical application.

You'll take your U20 OR U25 course for the necessary duration followed by four weeks of an exam preparation course before your language exam.

**\* Specific start dates for absolute beginners > A1**

Please consult our centre pages for specific information on course start dates.

## GERMANY ONLY

## Online prep-course for Studienkolleg

### Levels

Minimum German language level B1/B2

### Booking

on-site after choosing the Studienkollegs you want to apply to

## Package Fees



**Pre-evaluation**  
**FREE**



**Application process**



**University placement**



# Germany Career Pathway Programme for international professionals

## Let us help you excel in your career

From day one, we'll guide you in exploring career opportunities and understanding the German job market. With our expert support, you'll experience a smooth transition to Germany.



# Why choose a Career Pathway Programme?

Alpadia's Career Pathway Programme for international professionals includes:

- Assistance with obtaining a job search visa for Germany
- Support for a smooth transition once you have secured a job offer
- Creation of a detailed job search plan, including document preparation
- German language training tailored for professional and personal proficiency
- Evaluation of your academic and professional background to assess job opportunities in Germany
- Optimised preparation for job interviews



# Your profile

The Career Pathway programme in Germany is right for you if:

- You are not older than 40 years
- You have an academic degree of a recognized university
- You have at least 2 years experience in your field
- You have German knowledge of A1 or English knowledge of B2
- You are ambitious, dynamic and ready to embrace a new culture

# Where can I pursue *my career?*

With Germany's rising demand for specialists, international professionals have a unique chance to enter the job market. Our Career Pathway Programme ensures a smooth transition, supports your job search, offers the flexibility to work part-time and attend on-site interviews. Take advantage of our extensive experience and network of partner companies.



# How does it work?



**Pre-evaluation**  
1 week



**Visa process**



**Arrival assistance**



**Language courses**  
12-50 weeks



**Job search coaching**



**Change of visa title**  
approx. 8-12 weeks



**Starting the new job**

## Pre-evaluation process (free-of-charge)

Before you embark on your job search in Germany, we will examine your academic and professional background to confirm your visa eligibility and job prospects. Upon a positive evaluation, you will be provided with a customised job search roadmap and timeline.

## Visa process

We'll navigate you through the visa application process, covering everything from document preparation, translation, and notarisation to writing and reviewing your motivation letter, opening a blocked account and obtaining health insurance.

## Arrival assistance

Once you've received your visa, you're ready to start your journey! Whether you need an airport transfer, accommodation, or assistance with paperwork upon arrival, we'll be happy to help while you're studying with us in Berlin or Freiburg.

## German language course

Being able to speak German will make job hunting and settling down in Germany much easier. For that reason we offer specialised German courses at our schools in Berlin and Freiburg. Our courses will help you to pick up German quickly and learn about the local customs while starting your job search. If you need official German language certificates for your profession, we offer exam preparation courses - and you can take the exams with us on campus.

## Job search coaching

Once you get settled in Germany, your job search will begin and intensify rapidly. Our Career coaching team will assist you with creating your German CVs and tailoring cover letters to different positions.

You'll also do mock interviews with your career coach to practice your interview skills and get perfectly prepared for landing a job. Upon receiving a job offer, your career coach will provide you with further advice on your employment contract in Germany.

## Family

If your spouse is planning to join you, they have to be eligible for the same visa title and book our Career Pathway Programme. Of course, we'll offer a discount for your spouse.

# Language course and package fees

## Career Pathway

20 or 25 lessons per week

### Maximum age

40

### Levels

A2 > C1

### Duration

12 - 50 weeks

### Start dates

Every Monday, year-round

## Programme

### Career 20: C20

Our Career 20 courses are an excellent choice if you want to improve your general linguistic communication skills and still have free time on your hands.

### Career 25: C25

The Career 25 offers a more in-depth study of the language thanks to five additional lessons per week dedicated to oral communication. You improve your communication skills through roleplays and simulation exercises.



## Package Fees



Pre-evaluation

**FREE**



Application  
process package



Arrival assistance



Language course

Variable according  
to duration



Job search  
package



Spouse application  
process package

# Support and *next steps*



“

*Everything has been impeccable and extremely efficient at my school: from the school staff, to the administration, the processing of course, the quality of information received before the trip, as the welcome at my arrival in school, the host family and the management of classes. I would study with Alpadia again!*

”

**Patricia**

Alpadia Pathways student from Spain

# Support upon enrolment

When you enrol, our team will send you helpful pre-arrival information about your accommodation, transfers, our school and your chosen destination. We are always here to help you with any questions or doubts you may have at any stage of the process.

## Visa application guidance for non-EU applicants

If you are a non-EU national, you will need a national visa for a long term stay. We will help you with filing for the right type of visa.

**Please allow at least three months for visa application and processing.**

## Health insurance

We can offer you an insurance policy to cover you during your stay with us.

## Blocked account opening

If your nationality entitles you to a national visa for long-term stay in Germany (over 90 days), then opening a blocked account is one of the most important elements of your visa/residence permit application. Opening an online blocked account can be stressful, but we will assist you in every way we can.

## Airport transfer

For a smooth arrival to your destination, an Alpadia representative can meet you at the airport when you arrive. We'll take you directly to your new home from the airport to ensure that your arrival is stress-free.



# Support *after arrival*

We'll provide support throughout your course to make sure your experience is as enjoyable as possible.

## Accommodation

Looking for short-term and long-term accommodation in another country can be tricky. For that reason, we offer you high-quality accommodation on and off campus, based on your needs and budget to provide you with peace of mind so you can focus entirely on your studies and professional development.

We offer the following accommodations:

### **Host family** *from age 16*

Staying with a host family is a great way to learn about local culture, experience daily life with your hosts and learn everyday expressions.

We have excellent relationships with our host families and all of them meet our requirements in terms of quality.

### **Student apartment** *from age 18*

Our student apartments are located in the town centre, close to our schools and various shopping areas, cafés and restaurants and are well served by public transport. Our apartments offer comfortable double and single bedrooms. Shared facilities include a TV, a fully-furnished kitchen, a washing machine and wireless internet access.

### **Residence** *from age 16 in Freiburg and Montreux, from age 18 in Berlin, Lyon and Nice*

Our carefully selected residences are ideally located in the city centre, within 30 minutes of the schools and well served by public transport. Each residence provides our students with in-house laundry facilities, space to study and WiFi.

### **Self-catering homestay (only Berlin)** *from age 18*

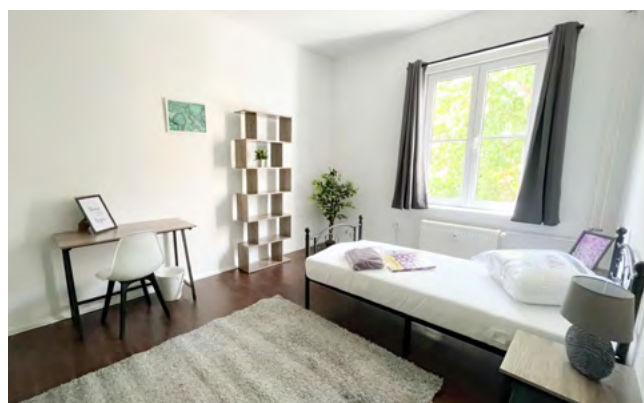
This very popular accommodation allows you to live with German people while enjoying some autonomy. Staying in a comfortable single bedroom, you will share the bathroom and communal areas with your flatmates and have access to the kitchen to prepare your meals.

### **Studio (only Montreux)** *from age 18*

Our centrally located studio includes a fully-equipped kitchen, bathroom, TV and internet connection. It's an ideal option if you're in a couple or just looking for more independent and a higher level of privacy and comfort.

### **Hotel and Bed & Breakfast** *from age 18*

Choose from a variety of hotels and B&Bs in and around the city centre, ranging from budget-friendly to luxurious.



## Address registration

One of the first steps when you settle in Germany is to get registered with local authorities. We'll guide you through the paperwork so you can register your address without hassle.

## Residence permit application

If you are a non-EU citizen, you will need to apply for a residence permit (or long stay visa) in order to be able to stay in **Germany** or **France**. Our student support team will help you with booking an appointment, gathering the required documents, completing the necessary forms, and if necessary, fully preparing you for your interview at the immigration office of your city of residence.

## 24/7 support

No matter what, in case of an emergency, our team will always be there for you, any day, any time.

## Included weekly activities

Explore the city, make new friends, and gain a deeper immersion in the language with our exciting events and activities. All our schools offer a packed schedule of things to do, from movie nights and dinners at local restaurants to tours of national landmarks and day trip. Whether you're a sports fan, an arts lover, a gourmet, or a thrill-seeker, our social program is full of opportunities to make your time at Alpadia unforgettable.

Bike around the lush Black forest in Freiburg, visit the prestigious museums of Berlin, explore the lake Geneva on a pedalo, or cruise on a vaporetto along Lyon... Make the most out of your free time!



# Support at the end of the programme

## Official language exam

Academic and Career Pathway Programmes usually end with an official test (TestDaF, Telc Hochschule or Telc Beruf). As approved test centres, our schools offer a variety of official exams which are the major requirement for entering higher education or receiving a work permit in Germany.

## University/career placement

After our initial support with applying, visa assistance (where applicable), settling down and learning the language, you'll be ready to start your academic or professional journey ahead. Whether you're choosing between universities or careers, we're here for you.

Through personalised coaching, we'll get to know your needs and qualifications, and guide you through choosing the right option for you. From the moment you join Alpadia, you become part of our family.

## Health insurance switch

It is very important to obtain the right kind of health insurance throughout your stay. Once you enrol at a university or sign your job contract, the first thing to take care of is to switch from your international traveller's health insurance to a German/French/Swiss statutory health insurance. We're here to help you through this process.



**Follow us online and stay tuned for our next webinar dates live with our Pathways team!**



# Alumni Network

When you join any Alpadia programme, you become part of our alumni community along with all students that have graduated or are currently studying with us. As a part of this community you'll meet likeminded people, make new friendships, build business connections and share your experiences.



**Diego**

Chile 



**Juan**

Colombia 

“When I moved to Berlin, I knew that I needed to improve my language skills before applying to university because at the time I didn't know any German! I decided to go with Alpadia Pathways because it seemed to be a good language school from the reviews.

My experience was great, and I love living in Berlin! It's such a fun city and it's given me a lot of independence; back in Chile I had everything done for me, and one of the most challenging parts of the course has been balancing making time to cook, study and go out with friends!

Now, I am a C1.2 level in German, and I'm hoping to apply to university in either Berlin or Munich and get a bachelor's degree in Electrical Engineering. Thanks to Alpadia Pathways I can now pursue my dream career – this course has truly exceeded my expectations!

“The Pathway programme was very helpful for me. I really didn't know how to manage all those things that I had to do, like the visa requirements and my university application. Those things require a lot of information that it is somewhat overwhelming, that's why I really liked the programme.

The people at Alpadia that were helping me were really insightful, they knew what they were doing and they were really interested in me as well. They wanted me to succeed and help me apply to all the universities I wanted.

I strongly recommend the University Pathway Programme at Alpadia!

[!\[\]\(86d3b88fd0158517fb1486a387a3286e\_img.jpg\) \*\*\*Have a look at Juan's path to his dream university!\*\*\*](#)

# Next steps

**1** **Contact us**, send all your academic certificates, CV, pre-enrolment form

**2** **Receive our Eligibility Timeline Assessment (ETA)** which gives you a detailed evaluation and timeline of your pathway to university or to enter the job market

**3** When your roadmap is confirmed, you will receive a checklist from our team to **prepare your application** (translating/notarizing necessary documents, send to our Pathways team)

**4** **Receive your conditional admission** (for students), or your recognition certificate of your academic background and profession (for job-seekers)

**5** **Prepare your visa application**

**6** Receive visa, **start your language course at Alpadia**

**7** **Start your language course at Alpadia**

**8** Finish language course and **pass language exam**

## UNIVERSITY PATHWAY

**9** **Final application:** either for up to three different universities or Studienkollegs

**10** **Receive admission offer or pass the entrance exam of Studienkolleg** and start your studies!

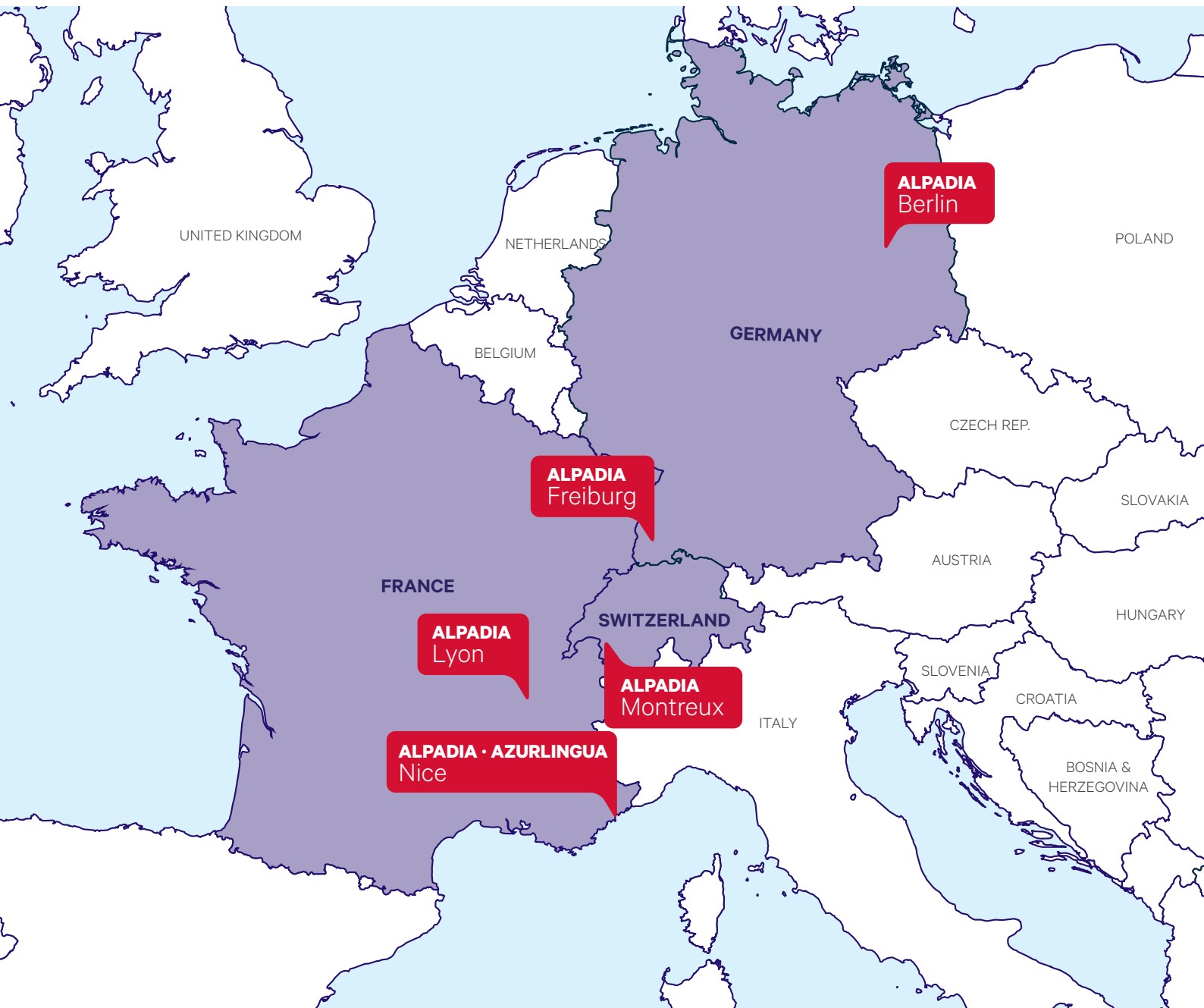
## CAREER PATHWAY

**9** **Career coaching** and job application

**10** **Start your new job in Germany!**



# Alpadia Schools



**ALPADIA**  
PATHWAYS

**Contact us:** [info@alpadia.com](mailto:info@alpadia.com) | +41 21 621 88 88

Alpadia Language Schools © 1996-2026 | All rights reserved.

[www.alpadia.com](http://www.alpadia.com)