



ALPADIA
PATHWAYS
by Kaplan International



Pathway programmes

Pathway programmes to Studienkollegs, bachelor's, master's and PhD degrees for students and work entry programmes for professionals abroad

Germany | France | Switzerland

www.alpadia.com

2022

Get ready for academic and professional success!

With over 20 years of experience in the study abroad industry, Alpadia has been helping international students inspire their future through language immersion. The aim of our pathway programmes is to help international students and professionals make their dreams of studying or working abroad a reality. We provide students with clear routes to higher education and careers abroad.

Study in Europe

Academic Pathway Programmes

- University Pathway (bachelor's, master's & PhD studies)
- Studienkolleg Preparation in Germany

Work in Germany

Career Pathway Programme

- Jobseekers looking to enhance their CV



Ugo Toselli
Director

Greetings,

No matter what's going on in the world, employers are always seeking international talent with language skills and in-depth cultural understanding. As the world begins to open up once again, the demand for international candidates is even higher.

Studying and working abroad is a fantastic, life-changing opportunity – but it also has its challenges. That's why we've created dedicated pathway programmes to support you as you enter the European academic world and job market.

Our immersive pathway programmes are so much more than language courses. We'll help you transition to higher education and the world of work, and prepare you for the challenges ahead.

We'll support you with everything from getting your visa, practising your interview skills, finding accommodation abroad and much more.

Start one of our pathway programmes and take the next exciting step in your career.

We look forward to welcoming you to Alpadia!

Content

Academic Pathway Programme	4
Why the Academic Pathway Programme?	6
Who is the programme for?	8
Where can I study?	10
Academic Pathway in France	12
Academic Pathway in Germany	14
What are my study options?	16
How does it work?	18
Language courses	20
Package fees	21
Career Pathway Programme in Germany	22
Why the Career Pathway Programme?	24
Who is the programme for?	25
Where can I pursue my career?	25
How does it work?	26
Language courses	28
Package fees	29
Student Support Services	30
Support upon enrolment	32
Support after arrival	34
Support at the end of the programme	36
Alumni network	37
Accommodation & Transfers	38
Next Steps	40
Terms & conditions	42



Academic Pathway Programme

Take your education further with Alpadia!

I'm Paula Andrea and my dream is to study medicine in Germany. I learned German with Alpadia for seven months in order to achieve the C1 level and start my university studies. Thanks to the Academic Pathway programme, I now have an advanced level of German and I'm studying at the preparatory college (Studienkolleg) so that I will be able to continue my international experience, get high quality education and become a doctor in Germany.

Paula Andrea from Colombia 🇨🇴

Why the Academic Pathway Programme?

If you want to pursue a degree abroad, Alpadia serves as a bridge to help you enter a foreign university and make sure you fulfil all requirements. These are the steps you'll take on the programme.

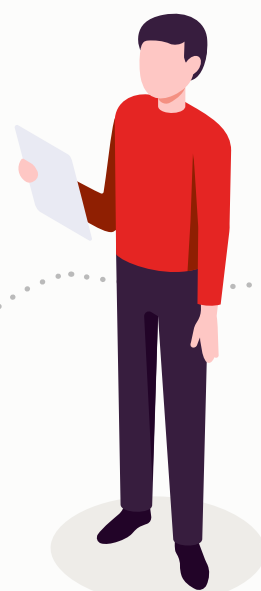
1

Once you've completed high school or university studies in your home country, we'll help you gain access to an undergraduate or postgraduate degree at a great university abroad



2

If you don't meet the necessary language and/or academic entry requirements for a direct entry to university, our pathway programme will prepare you accordingly



3

Study our pathway programme in the country where you will later achieve your degree. The goal of this time before your programme is to learn more about the local culture, integrate academically and, most importantly, improve your language level



4

Once the pathway programme ends, you'll enrol in your chosen bachelor's, master's or PhD degree at one of your desired universities and carry on with your studies



Start university fully prepared for the challenges ahead!

The benefits of taking a pathway course are endless. The most important one is being fully prepared for your life and studies abroad. The programme will enable you to get into highly reputed European universities and access excellent tuition. You'll also make lifelong friendships with people from all over the world.

Getting a university education is just the beginning. A good degree will open up exciting opportunities for a successful career.

Who is the programme for?

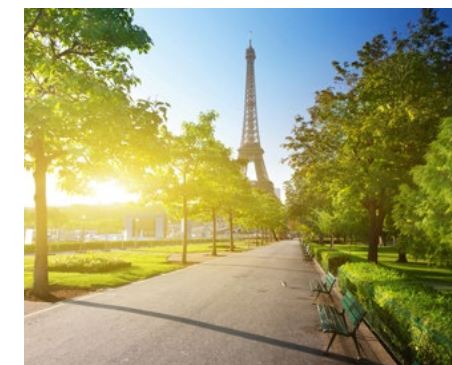
Our Academic Pathway Programme is designed for international students interested in pursuing a degree in Europe. The programme will help you build your language skills, adjust to living and studying abroad, and give you a better chance of admission to your dream university.

Where can I study?



France

France is not only the world's number one tourist destination, it's also a fantastic place to study, offering a multicultural experience and a rich social life. Affordable tuition fees - even for private institutions - mean education is accessible. Depending on the city, the cost of living is also reasonable. France offers vibrant campus cities like Paris, Lyon, Nice and Montpellier to name a few, providing students with a diverse learning experience in some of the most beautiful cities in Europe. As French is the fifth most spoken language in the world, studying in France and learning the language will be a great advantage in your future academic endeavours, career and life.



Switzerland

Switzerland's most notable strengths include innovation, diversity, precision technology and education. The country ranks high in economic competitiveness, production, human development and standard of living. Not only is Switzerland one of the most attractive places to live in the world, it's also a uniquely multicultural and multilingual place, with four national languages. The breathtaking landscapes, excellent transport links, the generous variety of cultural and leisure activities, along with the superior quality of higher education, all make Switzerland a top location to study in.



Germany

Germany offers a high standard of living to both its own citizens and ambitious international students. Some of the advantages of studying in Germany - regardless of your nationality - include: almost free-of-charge education at public universities and low cost private universities, work allowance (part-time) as a student, low living costs, international prospects and an 18-month jobseeker visa upon graduation. It is all these reasons and more that make Germany our most popular destination.



Academic Pathway in France

Why choose France for higher education?

- One of the top educational systems in the world
- An exceptional cultural dynamism
- France is at the crossroads of Europe
- Thanks to a network of partnerships between top companies and higher education institutions, studying in France is a career booster
- Graduate with a French degree recognized by the Ministries of Education or Labor

Our Alpadia school in Lyon

Minimum age	16
Language	French
Student capacity	50-100
Classrooms	6

Our school is in the heart of the city's cultural and festive life in Lyon's centre. The beautiful 19th century building is located on the "Presqu'île" (peninsula), overlooking the Rhône and a short walk from the Saône. The school has spacious and bright classrooms with high ceilings.


Only a stone's throw away from the biggest square in Lyon, straight after class you can soak up the atmosphere in the numerous nearby cafés and restaurants, where Lyon's students meet.

The school has direct access to the best pedestrian shopping areas in Lyon and there is a subway station and a bus stop less than five minutes' walk away from the school.

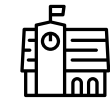


Our Partner schools


All programmes include hands-on training, practical experience and internships. With a unique network of companies and alumni, it is easier for students to find an internship or a job in France.




10 destinations



22 schools



100 Programmes



10 000 Partner Companies

Study Areas

- **AGRIBUSINESS**
Agribusiness Management, Land Development
- **BUSINESS**
Business Development, Management, Marketing, Negotiation
- **COMMUNICATION**
Broadcasting, Digital Communication, Journalism, Strategy
- **COMPUTER SCIENCES**
E-Commerce, Webmarketing, Web & Mobile App Development
- **DESIGN**
Fashion & Luxury, Interior Architecture, Interior Design
- **ENTREPRENEURSHIP**
Management, Social Entrepreneurship
- **ENVIRONMENT**
Green Economy, Land Development
- **FINANCE**
Accounting, Corporate Finance
- **FOREIGN AFFAIRS**
Foreign affairs, Geopolitics, Humanitarian Program, Management
- **HEALTH INDUSTRIES**
Health Industries, Management
- **HUMAN RESOURCES**
Human Resources, Management
- **TOURISM**
Tourism & Hospitality, Management, Tourism Industry

Accreditations & certifications


















Academic Pathway in Germany

Why choose Germany for higher education?


- Paid part-time work while on Bachelor, Master & PhD
- 18-month post study work permit
- Easy access to a secure job market
- World-class education & affordable living costs
- Abundance of outstanding courses and universities
- Globally recognised degrees
- Vibrant student life & endless activities on offer




Get access to the whole German higher education, any university, any city*




420+
Higher education
Institutes



100+
Universities



9K+
Bachelor
programs



8K+
Masters
programs

Study Areas

- **Business**
Business Administration, Management, Marketing, Logistics
- **Engineering**
Mechanical Engineering, Electronical Engineering, Civil engineering, Industrial Engineering, Mechatronics, Robotics
- **IT**
Computer Sciences, Computer Engineering, Applied Computer Sciences, Business Informatics, Medical Informatics
- **Life Sciences**
(Medicine), Bioinformatics, Biotechnical Chemistry
- **Media**
Media Informatics, Digital Media

Our Alpadia school in Berlin

Minimum age	16
Language	German
Student capacity	220-360
Classrooms	25

In the Schöneberg district, a stone's throw from the main attractions of the capital, our language school offers students a unique opportunity to attend German classes in one of the most beautiful areas of the city.

Many cafés, bars and restaurants can be found along the lively streets of this central district, easily reachable by public transport. From the metro station or the bus stop, you will be two minutes away from the spacious and welcoming premises of our course centre.

Along with its large and bright classrooms, equipped with first-class learning facilities, the school has a conference room, an internet café as well as a spacious lounge, where students can meet up during the breaks and buy refreshments.

Our Alpadia school in Freiburg

Minimum age	16
Language	German
Student capacity	120-200
Classrooms	15

Founded in 1972, our language school in Freiburg is established in an elegant neoclassical house located in the town centre. Here, you will find a stimulating, multicultural environment, conducive to learning German rapidly.

The course center has comfortable classrooms, a cafeteria as well as a spacious terrace and wonderful garden.

After your German classes, set off to discover the city. From the school, you will be close to the university, the numerous shops of the historical centre and its beautiful Gothic cathedral. And if you like to ride bikes, take advantage of the city's 400 kilometres of cycle lanes.

* Admission restrictions apply.



Accreditations
& certifications

FaDaf

CSN

telc
LANGUAGE TESTS

ACCREDITED
Eaquals
Excellence in Language Education

Q

ALT
Association of Language
Travel Organisations

What are my study options in Germany?



Direct access to university - University Pathway programme

Bachelor's Degrees

Germany offers a wide range of degree programmes at bachelor's level. In order to be able to directly start your bachelor's studies in Germany you need to have a direct entrance qualification. This depends on your country of origin and your study background. Within the pre-evaluation phase we will precisely check your academic background and take into account your university entrance qualification in order to start your academic pathway in Germany.

Master's Degrees

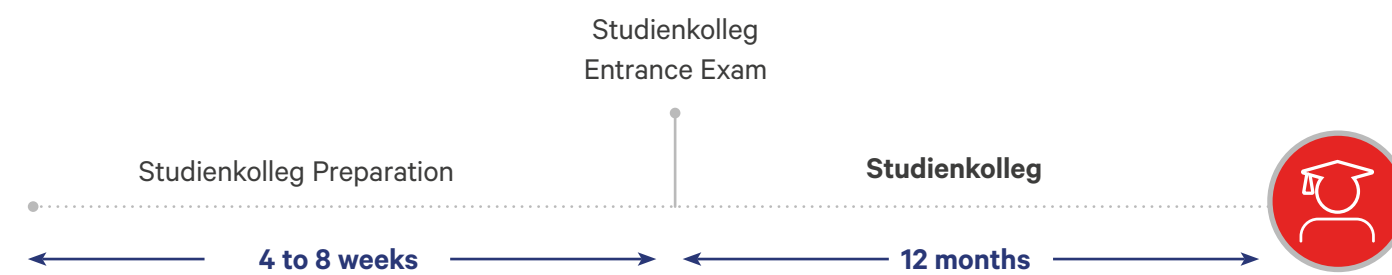
With over 10'000 master's degrees offered in more than 400 higher education institutions, Germany has become one of the most attractive destinations for international students to pursue their master's degrees in. Whether your academic background allows you to study at master's level in Germany depends on several factors, including your country of origin, recognition of your university and your degree in Germany, the curriculum of your previous studies, and your Grade Point Average. We will assess your academic background during the pre-evaluation phase of the Academic Pathway programme.

PhD

Annually, around 27'000 PhD candidates graduate in Germany. Almost 20% of the PhD graduates are international candidates. The research rigor, excellent research facilities, pragmatism and affinity to industrial application, financial support, a global network and high standard of living are among the reasons why international candidates pursue PhD studies in Germany.

PhD programmes are either a research position arranged with a specific professor in your field of expertise, or a structured programme with 1-2 years of initial coursework prior to research work. PhD positions are not always at a university. With the high-speed advancement of technology, the need for employees with in-depth research skills is becoming greater. Thus, many multinational companies and enterprises have started to work with universities to train their future employees through their internal PhD programs.

Finding a PhD position is very competitive and dependent on your academic and research background. Soft skills such as your knowledge of English and German are also a great factor in this. If you are keen to pursue your PhD studies in Germany, we can assess your chances within the pre-evaluation phase of the programme.



Indirect access to university - Studienkolleg preparation

Studienkolleg

Studienkollegs are public educational institutions in Germany which offer preparatory courses (foundation year courses) for international students hoping to study at a German university. You will need to attend a Studienkolleg before applying to a German university if your secondary school certificate is not recognised as equivalent to the German [Abitur](#).

The teaching language in all Studienkollegs is German. Studienkollegs usually have an entry test which always contains German language test at B2/C1 level and sometimes also includes a mathematics test.

Studienkollegs offer two semesters of preparation for the final exam, called Feststellungsprüfung (FSP) which contains subjects related to your desired field of studies in the future.

Once you have passed the FSP, you can directly apply to your desired study programme at any university in Germany.

Preparation for Studienkolleg (Vorbereitungskurs) at Alpadia Berlin

In order to prepare students in the best way possible for the entrance test for Studienkolleg, we have designed two four-week modules of preparatory courses. These modules focus on mathematics in German, as well as practising mock tests. All teachers are experienced in teaching at public Studienkollegs in Berlin.

- **Introductory module**
The first module covers the basic mathematics topics of German secondary school education, such as: linear and quadratic equations, fractional arithmetic, area and volume calculation, differential calculus, functions, integral calculus, percentage and interest calculation, trigonometry, statistics, etc.
- **Extension (top-up) module**
Here we dig deeper into different topics and practise mock tests from original entrance test samples. You will learn test-taking strategies and how to solve all the typical mathematics questions. Refer to the package [fees page](#) for the prices of each module.

How does it work?



Pre-evaluation process

- You'll fill out the free evaluation form
- We'll get back to you and make sure we have all of the required information and documents
- We'll evaluate your study background along with your academic interests
- You'll receive your personal evaluation results. This will include a timeline and a roadmap outlining the next steps

Application process

- We'll guide you through the authorisation, translation, notarisation, and submission of your documents
- We'll help you with your applications for university admission
- You'll receive at least one Conditional Letter of Acceptance (CLA) from a university or an invitation to the entry test at a public Studienkolleg (Germany only)
- You'll receive your suggested study plan

Visa assistance process (for non-EU applicants)

- We'll guide you through the preparation of your documents for your visa application
- We'll assist you in setting up your [blocked-account](#) and health insurance in Germany, France or Switzerland
- You'll apply for the right kind of visa with the necessary set of documents
- You'll receive your student applicant visa and get ready for joining your pathway programme at our Alpadia schools in Berlin or Freiburg

Intensive preparatory language courses - at least 12 weeks

- We'll help you obtain up to C1-Academic German or French certification
- You'll take language classes with us and take official language tests in Berlin, Freiburg, Montreux or Lyon.
- You'll benefit from our wide selection of accommodation options
- You'll be able to choose from a range of immersive activities and excursions while you're learning German or French
- You'll receive student support and academic counselling from our team
- You'll learn a language with likeminded international applicants, make lifelong friendships and exchange information regarding your study options in Germany, France or Switzerland
- You'll begin to integrate into a different culture and visit your desired universities/cities to shortlist your options

University placement process

- We'll evaluate your chances of getting a place in the field of study at your desired universities/Studienkollegs
- We'll assist you with shortlisting the programmes based on your personal goals, admission criteria, deadlines, location and more
- We'll set out a roadmap for your application process
- We'll help you with preparing your documents including your CV and personal statement
- We'll assist you with notarising the copy of your original documents
- You'll get expert assistance and advice throughout the process to help you shortlist your options and increase the number of university offers you receive
- We'll help you arrange your public health insurance, apply for a new residence permit and obtain student status and a student visa

^A Optional Studienkolleg Mathematics preparation course – in Berlin only.

^B Most university degrees begin in August, September or October. Some courses may begin in January, February or March.

Language Courses

University Pathway

20, 25 or 30 lessons per week

Minimum age	16
Levels	Beginner to advanced A1* > C1
Duration	12 to 46 weeks (for more details, see tables on next page)
Start dates	Every Monday, year-round

Programme

University 20: U20

Our University 20 courses are an excellent choice if you want to improve your general linguistic communication skills and still have free time on your hands.

University 25: U25

The University 25 offers a more in-depth study of the language thanks to five additional lessons per week dedicated to oral communication. You'll improve your communication skills through roleplays and simulation exercises.

You'll take your U20 OR U25 course for the necessary duration followed by four weeks of an exam preparation course before your language exam.

*** Specific start dates for absolute beginners > A1**
Minimum duration for A1 absolute beginners is 2 weeks. Please consult our centre pages for specific information on course start dates.

GERMANY ONLY

Studienkolleg Introductory Module

20 lessons per week

Levels
Minimum German language level B2
Duration
4 weeks
Start dates
April 11, June 13, October 17 2022

Studienkolleg Extension (Top-up) Module

20 lessons per week

Levels
Minimum German language level B2
Duration
4 weeks
Start dates
May 9, July 11, November 14 2022

Package Fees



Germany (in € / Euros)

Language level	Duration	U20	U25
A1 Beginner	46 weeks	5'830	7'720
A2 Elementary	38 weeks	5'250	6'610
B1 Intermediate	30 weeks	4'250	5'290
B2 Upper Intermediate	22 weeks	3'520	4'150
C1 Advanced	12 weeks	2'240	2'480

Studienkolleg preparation course (Berlin only)

Module	Duration	Prices	Start dates
Introductory module	4 weeks	890	11.04.2022
			13.06.2022
			17.10.2022
Top up module	4 weeks	890	09.05.2022
			11.07.2022
			14.11.2022

Additional Fees: Courier fee: € 90, Weekly accident/health insurance fee: € 12, Fast Track CLA (3 weeks): € 220, Documents notarisation: € 30 per copy, Homestay address registration € 55, Key handover fee for early/late arrivals: € 25.

Montreux (in CHF / Swiss Francs)

Language level	Duration	U20	U25
A1 Beginner	46 weeks	10'660	14'230
A2 Elementary	38 weeks	8'820	11'710
B1 Pre-intermediate	30 weeks	7'240	9'450
B2 Upper Intermediate	22 weeks	5'320	6'850
C1 Advanced	12 weeks	3'000	3'680

Additional Fees: Courier fee: CHF 110, Weekly accident/health insurance fee: CHF 12 (for stays longer than 90 days, please contact us for more information).

Lyon (in € / Euros)

Language level	Duration	U20	U25
A1 Beginner	46 weeks	8'350	10'660
A2 Elementary	38 weeks	6'950	8'820
B1 Pre-intermediate	30 weeks	5'680	7'110
B2 Upper Intermediate	22 weeks	4'330	5'320
C1 Advanced	12 weeks	2'480	2'920

Additional Fees: Courier fee: € 90, Weekly accident/health insurance fee: € 12, Key handover fee for early/late arrivals: € 25.

Career Pathway Programme in Germany

Let us help you excel in your career

We'll work with you from day one to help you explore your career options and navigate the complex job market in Germany. Whether you already know which career you wish to pursue or you are just starting out, we'll help you take the next steps.

Why the Career Pathway programme?

Alpadia's new Career Pathway programme for **international professionals** includes:

- Evaluation of your academic and career background and its alignment with German recognition regulations
- Assistance in securing a work visa or EU Blue Card
- Intensive German courses tailored to professionals joining the German job market
- Accommodation during the programme
- Preparation for finding a job, taking into account your academic and professional background as well as personal preferences
- Optimised job interview preparation
- Smooth transition into your new job

Who is the programme for?

The Career Pathway programme in Germany is right for you if:

- you are at least 21 years old
- you have at least a few years' experience in your field (except for medical doctors)
- you have, ideally, an academic degree related to your field of expertise (except for IT experts)
- you are ambitious, flexible and dynamic
- you are ready to embrace a new language and culture

Where can I pursue my career?

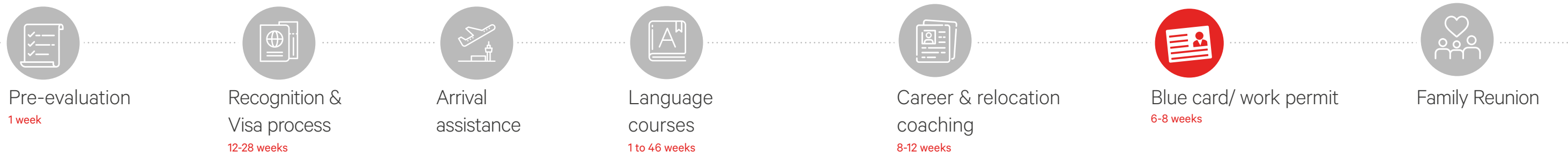
The Career Pathway programme is currently only available in Germany

With its growing need for specialists, Germany encourages the migration of skilled professionals from all over the world. While the transition to the dynamic German job market is appealing to many international professionals, the process can be intimidating.

Our Career Pathway programme will provide you with expert guidance for a smooth transition into the German job market. You'll benefit from our experience and extensive network of partner companies.



How does it work?



Pre-evaluation process - free-of-charge

Before you start your job search in Germany, you need to be aware of the following:

- Your academic and professional background needs to be recognised by German authorities
- Depending on your profession, you may need a work permit
- Depending on your nationality, you may need a visa

Once you've met the above conditions, you'll receive your personal job search roadmap and timeline.

Recognition & Visa process

We'll guide you through the recognition process, starting from preparation, translation and notarisation of your documents, all the way to submission of your recognition request until you receive your certificate from local authorities.

Visa assistance process (for non-EU applicants)

Once you receive your recognition certificate, we'll help you apply for your visa. This will include help with document preparation, motivation letter review, [blocked-account](#) opening, health insurance and more.

Arrival assistance

Once you've received your visa, you're ready to start your journey! Whether you need an airport transfer, accommodation, or assistance with paperwork upon arrival, we'll be happy to help while you're studying with us in Berlin or Freiburg.

Intensive German courses

Being able to speak German will make job hunting and settling down in Germany much easier. For that reason we offer specialised German courses at our schools in Berlin and Freiburg. Our courses will help you to pick up German quickly and learn about the local customs while starting your job search. If you need official German language certificates for your profession, we offer exam preparation courses - and you can take the exams with us on campus.

Career & relocation coaching

Once you get settled in Germany, your job search will begin and intensify rapidly. Our career coaching team will assist you with creating your English and German CVs and tailoring your cover letters to different positions. You'll also do a mock interview with your career coach to practise your interview skills and identify your strengths and weaknesses. Upon receiving a job offer, your career coach will provide you with further advice on your employment contract.

Once you've secured your new job, the next step is to find a long-term home. We'll help you navigate the German housing market with ease, check your lease contract and organise your move. We'll help you obtain your EU Blue Card/residence permit and even assist you with choosing and signing up for a phone plan, if you choose.

Family reunion

If your partner, spouse and/or children plan on joining you after you've settled down, we'll help your family with everything from visa application assistance to German courses, finding Kita/Kindergarten/school, registration and arrival.

Language Courses

Career Pathway

20 or 25 lessons per week

Minimum age
21

Levels
Beginner to advanced A1* > C1

Duration
1 to 46 weeks (see prices next page)

Start dates
Every Monday, year-round

Programme

Career 20: C20

Our Career 20 courses are an excellent choice if you want to improve your general linguistic communication skills and still have free time on your hands.

Career 25: C25

The Career 25 offers a more in-depth study of the language thanks to five additional lessons per week dedicated to oral communication. You improve your communication skills through roleplays and simulation exercises.

Private and Online Courses

With your private teacher, you'll work on the skills you wish to develop and progress at your own pace. Private tuition may cover specific topics including culture, business, finance and healthcare, preparing you for communication situations you may encounter in your field. You can either study in school or online, from your own home or office.

* Specific start dates for absolute beginners > A1

Minimum duration for A1 absolute beginners is 2 weeks. Please consult our centre pages for specific information on course start dates.

Package Fees



Germany  (in € / Euros)

Duration	BERLIN		FREIBURG	
	Career 20	Career 25	Career 20	Career 25
1 week	165	210	170	220
2-3 weeks	160	205	165	215
4-7 weeks	155	185	160	195
8-11 weeks	145	180	150	190
12-23 weeks	130	175	135	185
24-35 weeks	125	165	130	175
36+ weeks	115	160	125	170

Additional Fees: Application fee: € 75, Courier fee: € 90, Weekly accident/health insurance fee: € 12, Documents notarisation: € 30 per copy, Homestay address registration € 55, Key handover fee for early/late arrivals: € 25.

Private courses & online lessons: 1 lesson (45 minutes): € 55

* Mandatory package for all Career Pathway applicants
** Mandatory for all applicants except for EU Citizens looking for a non-regulated job.

Support and next steps

Everything has been impeccable and extremely efficient at my school: from the school staff, to the administration, the processing of course, the quality of information received before the trip, as the welcome at my arrival in school, the host family and the management of classes. I would study with Alpadia again!

Patricia from Spain 🇪🇸

Support upon enrolment

When you enrol, our team will send you helpful pre-arrival information about your accommodation, transfers, our school and your chosen destination. We are always here to help you with any questions or doubts you may have at any stage of the process.

Visa application guidance for non-EU applicants

If you are a non-EU national, you will need a national visa for a long term stay in Germany. We will help you with filing for the right type of visa.

Please allow at least three months for visa application and processing.

Health insurance

We can offer you an insurance policy to cover you during your stay with us.

Blocked account opening

If your nationality entitles you to a national visa for long-term stay in Germany (over 90 days), then opening a blocked account is one of the most important elements of your visa/residence permit application. Opening an online blocked account can be stressful, but we will assist you in every way we can.

Airport transfer

For a smooth arrival to your destination, an Alpadia representative can meet you at the airport when you arrive. We'll take you directly to your new home from the airport to ensure that your arrival in Germany is stress-free.



Support after arrival

We'll provide support throughout your course to make sure your experience is as enjoyable as possible.

Accommodation

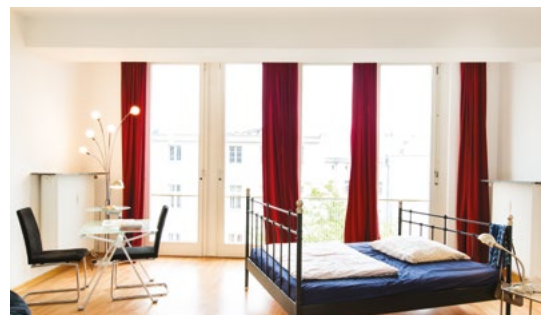
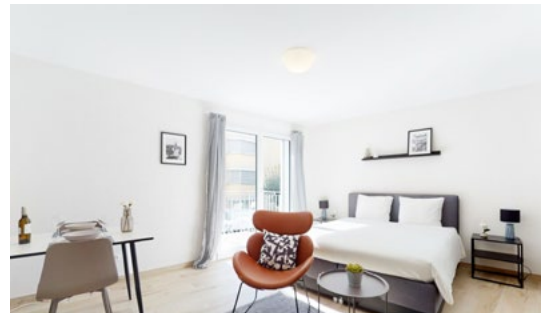
Looking for short-term and long-term accommodation in another country can be tricky.

For that reason, we offer you high-quality accommodation on and off campus, based on your needs and budget to provide you with peace of mind so you can focus entirely on your studies and professional development.

Please note that for a long-term stay in Germany you are obliged to register your address with local authorities. In order to do so, your landlord needs to sign a specific form and agree to your residence in their property. If you arrange your accommodation with us, we'll take care of those details.

We offer the following accommodations:

- **Host family** *from age 16*
Staying with a host family is a great way to learn about local culture, experience daily life with your hosts and learn everyday expressions. We have excellent relationships with our host families and all of them meet our requirements in terms of quality.
- **Student apartment** *from age 18*
Our student apartments are located in the town centre, close to our schools and various shopping areas, cafés and restaurants and are well served by public transport. Our apartments offer comfortable double and single bedrooms. Shared facilities include a TV, a fully-furnished kitchen, a washing machine and wireless internet access.
- **Residence** *from age 16*
Our carefully selected residences are ideally located in the city centre, within 30 minutes of the schools and well served by public transport. Each residence provides our students with in-house laundry facilities, space to study and WiFi.
- **Self-catering homestay (only Berlin)** *from age 18*
This very popular accommodation allows you to live with German people while enjoying some autonomy. Staying in a comfortable single bedroom, you will share the bathroom and communal areas with your flatmates and have access to the kitchen to prepare your meals.
- **Studio (only Montreux)** *from age 18*
Our centrally located studio includes a fully-equipped kitchen, bathroom, TV and internet connection. It's an ideal option if you're in a couple or just looking for more independent and a higher level of privacy and comfort.
- **Hotel and Bed & Breakfast** *from age 18*
Choose from a variety of hotels and B&Bs in and around the city centre, ranging from budget-friendly to luxurious.



Address registration

One of the first steps when you settle in Germany is to register your home address with local authorities. We'll guide you through the paperwork so you can register your address without hassle.

Residence permit application

If you are a non-EU citizen, you will need to apply for a residence permit in order to be able to stay in Germany. Our student support team will help you with booking an appointment, gathering the required documents, completing the necessary forms, and fully preparing you for your interview at the immigration office of your city of residence.

24/7 support

No matter what, in case of an emergency, our team will always be there for you, any day, any time.

Included weekly activities

Explore the city, make new friends, and gain a deeper immersion in the language with our exciting events and activities. All our schools offer a packed schedule of things to do, from movie nights and dinners at local restaurants to tours of national landmarks and day trip. Whether you're a sports fan, an arts lover, a gourmet, or a thrill-seeker, our social program is full of opportunities to make your time at Alpadia unforgettable.

Enjoy an authentic Swiss fondue at our school in Zurich, bike around the lush Black Forest in Freiburg, visit the prestigious museums of Berlin, explore the lake Geneva on a pedalo, or cruise on a vaporetto along Lyon...

Make the most out of your free time!



Support at the end of the programme

Official language exam

Academic and Career Pathway Programmes usually end with an official test (TestDaF, Telc Hochschule or Telc Beruf). As approved test centres, our schools offer a variety of official exams which are the major requirement for entering higher education or receiving a work permit in Germany.

Academic/career placement

After our initial support with applying, visa assistance (where applicable), settling down in Germany and learning the language, you'll be ready to start your academic or professional journey ahead. Whether you're choosing between universities or careers, we're here for you. Through personalised coaching, we'll get to know your needs and qualifications, and guide you through choosing the right option for you in Germany. From the moment you join Alpadia, you become part of our family.

Health insurance switch

It is very important to obtain the right kind of health insurance throughout your stay in Germany. Once you enrol at a university or sign your job contract, the first thing to take care of is to switch from your international traveller's health insurance to a German statutory health insurance. We're here to help you through this process.



Follow us online and stay tuned for our next webinar dates live with our Pathways team!



Alumni Network

When you join any Alpadia programme, you become part of our alumni community along with all students that have graduated or are currently studying with us. As a part of this community you'll meet likeminded people, make new friendships, build business connections and share your experiences.



Uliana

Russia



Juan

Colombia

“Last year I attended a two-month German course in Alpadia. It was perfect and I learned a lot. The private lessons helped me a lot in preparing for the entrance exams. My teachers and study groups were very nice.

During this time I learned about the University Pathway Program and I decided to join. The Pathway Team were there for me from start to finish. They checked my documents, kept my account at Uni-Assist and were always there for my questions. That played a big role in my move to Germany. If something is unclear to me even now or just need advice, I can still contact them, even though I have already been accepted at the preparatory college and I've ended my programme.

I am very happy that I am now studying in Germany and I am grateful to Alpadia University Pathway Programme for making it a reality!

“The Pathway programme was very helpful for me. I really didn't know how to manage all those things that I had to do, like the visa requirements and my university application.

Those things require a lot of information that it is somewhat overwhelming, that's why I really liked the programme. The people at Alpadia that were helping me were really insightful, they knew what they were doing and they were really interested in me as well. They wanted me to succeed and help me apply to all the universities I wanted.

I strongly recommend the University Pathway Programme at Alpadia!

[Have a look at Juan's path to his dream university!](#)

Accommodation

Weekly fees, From Sunday to Saturday

Montreux (in CHF / Swiss Francs)

Duration	Host family				Student apartment		Residence		Studio	
	B&B	HB	B&B	HB	no meals	no meals	no meals	no meals	no meals	no meals
	Single	Single	Double	Double	Single	Double	Single	Double ^o	Single	Double ^o
1 week	280	350	240	320	315	240	390	310	400	230
2-3 weeks	270	330	230	300	295	230	390	310	400	230
4-7 weeks	260	320	220	290	285	220	390	310	400	230
8+ weeks	240	300	200	270	275	200	390	310	400	230

Lyon (in € / Euros)

Duration	Host family				^{2o} Student apartment		Residence	^{3o} Hotel-residence**	^{3o} Hotel-residence***
	B&B	HB	B&B	HB	no meals	no meals	no meals	no meals	no meals
	Single	Single	Double	Double	Single	Double	Single	Single	Single
1 week	210	260	180	225	300	220	250	350	590
2-3 weeks	200	250	170	215	280	200	200	350	590
4-7 weeks	190	240	160	205	270	190	190	350	590
8+ weeks	180	230	150	195	260	180	180	350	590

Berlin (in € / Euros)

Duration	Host family				Student apartment		Residence	Self-catering homestay WG	
	B&B	HB	B&B	HB	no meals	no meals	no meals	no meals	no meals
	Single	Single	Double ^o	Double ^o	Single	Double ^o	Single	Single	Double ^o
1 week	250	300	200	260	370	290	370	200	155
2-3 weeks	210	265	170	225	295	255	295	180	150
4-7 weeks	195	250	165	210	285	245	275	170	145
8+ weeks	185	240	160	200	275	225	250	160	140

Freiburg (in € / Euros)

Duration	Host family				Student apartment		Residence
	B&B	HB	B&B	HB	no meals	no meals	no meals
	Single	Single	Double	Double	Single	Double	Single
1 week	255	305	205	265	370	290	370
2-3 weeks	215	270	175	230	295	255	295
4-7 weeks	200	255	170	225	275	245	275
8+ weeks	190	245	165	215	250	225	250

One extra night is available on arrival and/or on departure at 25% of the weekly accommodation rate. ^oOnly available for 2 participants booking this option together, fee per participant

^{2o} Option to book an ensuite with private sink and shower for a € 20 per week extra ^{3o} Not including local tourist tax to be paid directly at the hotel-residence

Transfers

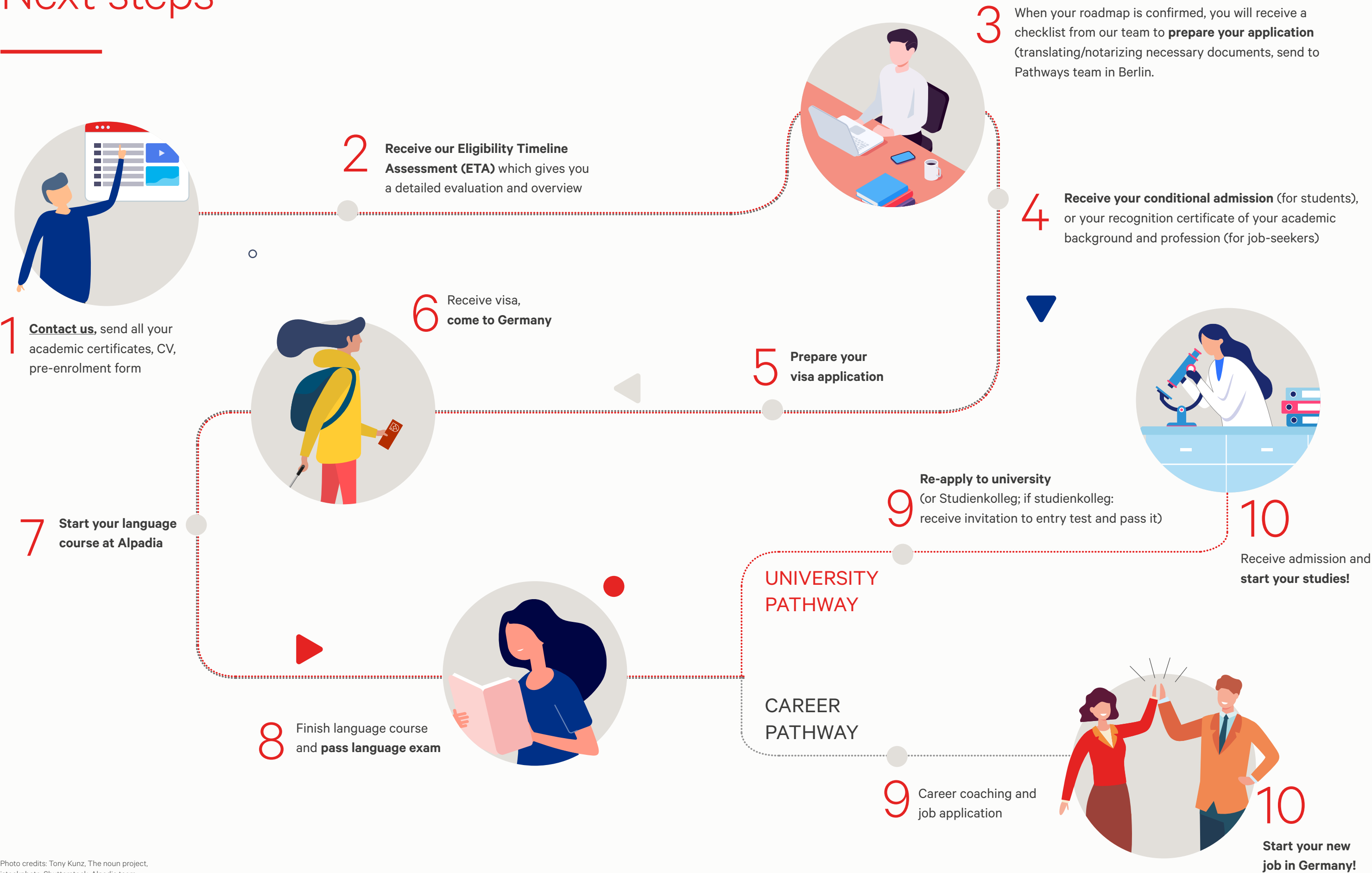
CHF = SWISS FRANCS / € = EUROS

Our transfers are shared transfers with no more than 45 minutes waiting time (90 min in Freiburg).
The price for 2 or 3 persons is only available for students booking together and with the same address.

ADULT SCHOOL	ONE WAY PRICE PER PERSON	1 PERSON	2 PERSONS	3 PERSONS
MONTREUX	 Geneva GVA  Geneva Train station*	CHF 190	CHF 120	CHF 80
	 Zürich ZRH  Zurich Train station*	CHF 650	CHF 450	CHF 320
LYON	 Lyon - LYS	€ 115	€ 84	€ 72
	 Lyon Train station*	€ 50	€ 25	€ 17
BERLIN	 Berlin Brandenburg BER	€ 95	€ 65	€ 55
	 Berlin Train station*	€ 80	€ 50	€ 45
FREIBURG	 EuroAirport Bâle/ Mulhouse EAP/BSL/MUL	€ 85	€ 60	€ 52
	 Zürich ZRH	€ 140	€ 115	€ 100
	 Frankfurt FRA	€ 175	€ 160	€ 150
	 Freiburg Train station*	€ 30	€ 15	€ 10

* For 3 students or more, please inform us of the amount of luggages.

Next steps



Terms & conditions

1. Registration and confirmation

All bookings received by Alpadia S.A. ("Alpadia") by post, e-mail or telephone and online registrations will be deemed to be valid. By signing and returning the application form the participant is agreeing to enter into a binding contract with Alpadia. Confirmation of the booking will be made within a maximum of 5 working days following receipt of a valid booking (if the course booked is available). Once this booking confirmation has been issued, a legally binding contract based on these terms and conditions will be formed between the participant and Alpadia subject to the participant meeting all applicable immigration requirements. Where the registered person is an adult, that person will become a contract partner of Alpadia. Where the registered person is not an adult, their parent/guardian will become the contract partner of Alpadia. In that event, the parent/guardian must sign the contract and give their correct address and contact details. The person who is contractually registered to a language course will become a "participant", designated as such below. The person who signs the contract (either the participant themselves or, where the person is a minor, their parent/guardian) will be identified as a "contract partner", designated as such below.

2. Information provided at the time of registration

The contract partner expressly declares that the information provided at the time of registration for a language course is true and accurate. Any inaccurate information or omission may lead to immediate expulsion from the course (for example, if an "absolute beginner" overestimates their level of linguistic ability in order to be able to start a course on a date other than the official commencement date for "absolute beginners"). In that event, the costs of the course will not be refundable, either in whole or in part. At the time of enrolment, participants are required to take a compulsory language test online after confirming their booking. Alpadia reserves the right to refuse the booking if the participant fails to take the compulsory language test. Alpadia cannot guarantee that a participant will be placed in a class at their appropriate aptitude level if the participant does not take the online placement test.

3. Application fees

Alpadia will charge the following Application Fee for each booking: CHF 110 (for bookings in Switzerland) or € 75 (for bookings in France and Germany). This fee is non-refundable. In the event of late registration (being two weeks or less before the commencement date of the relevant language course), participants will be charged an extra fee of CHF 40 (for bookings in Switzerland) or € 35 (for bookings in France and Germany) for express processing of their booking.

4. Changes to course

Any changes required by a participant must be requested with the relevant period of notice set out below:
Minimum notice for changes **before course commencement** (no charge)

France and Germany	4 weeks' notice
Switzerland	4 weeks' notice

Fees for changes **post course commencement**. For change of school location, course dates, accommodation or course type

Region	Fee
France and Germany	€ 70
Switzerland	CHF 80

Alpadia is not obliged to fulfil any change request. If changing to a location (or changing course) where fees are lower prior to the course start date, the difference in fees will be refunded. If the change occurs after the course commencement date, there will be no refund of the difference. If changing to a more expensive location or course, the difference in fees will be charged. All changes are subject to Alpadia's discretion and require approval of the Customer Care team. Participants will not be charged a change fee if they extend their course, but late homestay extensions may require a re-placement fee.

5. Conditions of payment

Fees will become payable immediately on receipt by the participant/contract partner of their confirmation of booking as follows:

- the Application Fee of CHF 110 (for bookings in Switzerland) or € 75 (for bookings in France and Germany) (which is additional to the cost of the language course); and
- payment of the premium for the cancellation insurance and/or the health insurance (where such policies have been taken out by the participant).

The balance of the total fees for the course, accommodation and any extra activities must be paid at least four weeks prior to the commencement date of the language course. Neither the course nor the accommodation will be deemed to have been paid for unless the relevant amount has been received into the account details provided by Alpadia upon confirmation of registration.

In the event of a booking made within 2 weeks of the commencement date of the language course, the contract partner acknowledges that the full amount is due at registration.

Payment of fees can be made online by credit card (Visa and MasterCard only) through SaferPay or by bank transfer. Details of how to pay will be provided at the time of booking.

6. Payment period

In the event that the payment periods specified by Alpadia in the confirmation are not complied with, the contract partner will be held liable. In such circumstances, Alpadia reserves the right to refuse the participant entry to the course. No claims will be accepted by Alpadia that arise from the contract partner's failure to comply with the payment periods communicated to the contract partner.

7. Proof of payment

Participants may be asked to provide documentary proof of payment of the full fee for their course and accommodation either before or on commencement of the language course. Failure to do so may mean that entry to both the course and the accommodation will be refused. In the case of late registration, Alpadia will ask for proof before sending the pre-arrival documentation.

8. Cancellation – standard policy

This Standard Cancellation Policy shall apply except where varied by the specific provisions in clause 9 below.

Cancellation Notice	Charges & Refunds
Written cancellation notice provided 14 days or more before the arrival date listed on the booking confirmation form	For Academic Pathway Programs (APP): You shall be refunded: 100% of the tuition and accommodation fee less the amounts set out below: (a) Application Fee (CHF/€ 750) (b) University Placement Fee (CHF/€ 450) (c) Any non-refundable Insurance Fee (d) Administration Fee (CHF 150 or € 100) (e) Courier Fee (CHF 110 or € 80) (f) Bank Charges (CHF 50 or € 40) (g) Transfer Fees For Career Pathway Programs (CPP): You shall be refunded: 100% of the tuition and accommodation fee less the amounts set out below: (a) Recognition & Visa process fee (€ 1290) (b) Career & relocation coaching fee (€ 3500) (c) Family reunion fee (€ 1500/ € 2500/ € 3000) (d) Any non-refundable Insurance Fee (e) Courier Fee (€ 80) (f) Bank Charges (€ 40) (g) Transfer Fees
Written cancellation notice provided less than 14 days before the arrival date listed on the booking confirmation form, including failure to show up	For Academic Pathway Programs (APP): You shall be refunded: 100% of the tuition and accommodation fee The following items shall not be refundable: (a) Application Fee (CHF/€ 750) (b) University Placement Fee (CHF/€ 450) (c) Any non-refundable Insurance Fee (d) Administration Fee (CHF 150 or € 100) (e) Courier Fee (CHF 110 or € 80) (f) Bank Charges (CHF 50 or € 40) (g) Transfer Fees For Career Pathway Programs (CPP): You shall be refunded: 100% of the tuition and accommodation fee less the amounts set out below: (a) Recognition & Visa process fee (€ 1290) (b) Career & relocation coaching fee (€ 3500) (c) Family reunion fee (€ 1500/ € 2500/ € 3000) (d) Any non-refundable Insurance Fee (e) Courier Fee (€ 80) (f) Bank Charges (€ 40) (g) Transfer Fees
On written notification of a visa rejection and receipt of supporting documentation	In the event that a participant is refused a visa and a copy of the original refusal document issued by the Swiss/German/French Embassy (as applicable) is supplied, Alpadia undertakes to reimburse the whole amount paid, less: (a) the Administration Fee of CHF 150 (for bookings in Switzerland) or € 100 (for bookings in France and Germany); (b) the Bank Charges of CHF 50 (for bookings in Switzerland) or € 40 (for bookings in France and Germany); and (c) the Courier Fee of CHF 110 (for bookings in Switzerland) or € 80 (for bookings in France and Germany). (d) for Academic Pathway Programme: Application Fee (CHF/€ 750) (d) for Career Pathway Programme: Recognition & Visa process (1290€)

The amounts to be paid by the contract partner on cancellation must be received no later than 10 days following receipt of the cancellation invoice.

All refunds must be paid to the original payer's bank account or credit card and cannot be made to any other person.

9. Cancellation - Distance Selling Regulations

'Distance Contract' means a distance contract or an off-premises contract as defined in the Consumer Contracts (Information, Cancellation and Additional Charges) Regulations 2013 (as amended

SWITZERLAND, FRANCE & GERMANY

from time to time).

In the event of a Distance Contract, participants who are EU citizens shall have the right to cancel the legally binding contract formed in accordance with paragraph 1 of these Terms and Conditions if the participant/contract partner gives notice of cancellation to Alpadia **within the fourteen (14) calendar day** period beginning on the day on which the booking confirmation was issued by Alpadia.

- If a participant exercises their right to cancel during this fourteen (14) day period, they will receive a full refund of all amounts already paid by the participant less any fees charged for services already performed by Alpadia.
- If the participant has already commenced studying with Alpadia during the fourteen (14) day period, they must pay a reasonable charge calculated by Alpadia for the period of study undertaken.
- To exercise the right to cancel under the EU distance contract terms, the participant must inform Alpadia of the participant's decision to cancel this agreement by email to: bookings@alpadia.com.

10. Cancellation insurance

Alpadia recommends that contract partners take out a cancellation insurance policy. In the event that the participant has taken out cancellation insurance and then cancels their course, they will be responsible for notifying their insurers. Under no circumstances will a cancellation insurance policy render Alpadia liable for non-reimbursement of a course. Alpadia offers cancellation insurance for certain courses, details are available on request.

11. Termination

'Termination' means stopping or leaving all or part of the course or courses booked, or reduction in weekly lessons, including extensions, once the first course has started.

When determining the number of weeks completed, a partial week will be counted as a whole week, provided the student was present at least one day during the scheduled week. Used weeks of discounted tuition and accommodation packages will be charged at the full brochure weekly rate when any refund is calculated.

In all cases additional service charges (e.g. airport transfers, courier fees, application fees, medical insurance, program supplement fee, etc.) are non-refundable and written notification of termination must be given to the Customer Care team. Students who terminate their program may not be eligible to receive an Alpadia certificate and will not be allowed to stay in Alpadia accommodation.

Tuition

Students wishing to terminate must give 4 weeks' written notice to the Student Support Manager. No refunds will be made for tuition. Tuition fees are non-transferable to other students.

Accommodation

In order to terminate their accommodation contract, students must give at least 4 weeks' notice in writing to the Student Support Service. The student acknowledges that some hostels and apartments require more notice and may charge a higher cancellation fee - where this is the case it will be notified to the student.

A refund will be made of the unused accommodation fee less the applicable notice period of 4 weeks and the applicable change fee. Refunds will be calculated based on the total accommodation weeks booked, including periods of extension. Used weeks of discounted accommodation packages will be charged at the full brochure weekly rate when any refund is calculated.

Some residential options may have additional terms and conditions relating to reservation cancellation, including minimum notice period; these will be included in any refund calculation.

All refunds must be paid to the original payer's bank account or credit card and cannot be made to any other person.

12. Passports and visas

The participant will be responsible for complying with the security regulations, the regulations governing the obtaining of a visa, and the health regulations required to enter and stay in Switzerland/Germany/France (as applicable). Under no circumstances will Alpadia be held liable for any notice of refusal to enter or stay in Switzerland/Germany/France given to a participant. Information relating to the regulations governing security, health and obtaining a visa can be obtained from the Swiss/German/French Embassy or Consulate in the participant's home country. No reimbursement will be made, either in full or in part, in the event that a participant is refused permission to enter or stay in Switzerland/Germany/France as a result of their own fault or conduct. Alpadia will provide a letter of invitation to the participant to assist with the visa application following receipt of all the costs of the language course from the participant/contract partner.

13. Accident/health insurance

Every participant will be solely responsible for obtaining accident and health insurance cover valid for the country in which they intend to stay for the whole duration of their stay. This insurance is mandatory during a participant's study at Alpadia and can be purchased through Alpadia or other insurance providers. In the event that any participant does not have such cover at the time of registration, an appropriate insurance policy covering these risks

can be purchased from Alpadia if requested.

14. Damage caused by participants / civil liability

Prior to arrival at Alpadia, each participant must take out a policy of insurance to cover any loss/damage which they may cause during the course of their stay. In any event, and even if a participant does not feel that it is appropriate for them to take out such insurance, the participant and/or contract partner shall remain liable for any losses, expenses and claims suffered or incurred by Alpadia, its commercial partners and any other third party caused by the conduct of the participant unless such losses, expenses or claims are attributable to any act or omission of Alpadia.

15. Obligations of participants

Participants are required to attend the course and to arrive on time. They are responsible for choosing a course which is appropriate for their level of capability. Failure to attend the course, or irregular attendance, or any disruption to lessons caused by an individual participant's behaviour will entitle Alpadia to expel the participant. The same sanction may apply to inappropriate behaviour in the place of accommodation offered by Alpadia. Alpadia will not refund or pay compensation for any part of the missed course or accommodation or any additional travel costs incurred caused by a participant's expulsion.

16. Accommodation: Arrivals and departures

All accommodation is booked from the Sunday before the course start date until the Saturday morning after the course end date, unless otherwise advised. A partial week may be counted as 1 week's accommodation. Check-in times and check-out times are included on the fact sheet for your chosen accommodation unless special arrangements have been made with the accommodation provider or an alternative check-in/check-out time is noted in your booking confirmation. Students arriving between 22:30 – 06:00 may be asked to book alternative accommodation in a hotel on their first night due to late/early arrival at accommodation, or be charged an extra night of accommodation. Students wishing to book an extra night on arrival (for Saturday arrivals) and/or on departure (for Sunday departures) can do so at a rate that is 25% of the weekly accommodation rate for their chosen accommodation.

17. Duration of lessons

All language lessons are 45 minutes in duration unless otherwise stated. Courses run from Monday to Friday and lessons are scheduled in the morning or the afternoon. Alpadia cannot guarantee a specific timetable.

18. Substitution policy

If, after taking the online placement test, a participant is found to be at a level which is not appropriate for their booked course, the school reserves the right to place the participant in an appropriate level class, which may have fewer lessons and a different curriculum. Participants who do not have the ability to follow any course on offer may be required to terminate their studies with Alpadia. We also reserve the right to cancel courses at short notice due to insufficient demand.

19. Course changes

Alpadia has the right to change accommodation options, course dates, course curricula, instructors, locations and courses at any time at its discretion. However, in cases where the course is rescheduled prior to the start of the first course and the new date is unacceptable to the participant, all fees will be refunded.

20. Prices

Alpadia may change prices due to tax increases, governmental actions or any other event or circumstance beyond Alpadia's reasonable control or circumstances that may affect the operations of the business. Prices are valid for courses starting in 2021.

21. Learning materials

All learning materials will be made available to participants during their course and are included in the tuition fee.

22. Late arrival

In order to avoid disturbing the class, any participant who arrives more than 15 minutes late should wait for the break before joining the class.

23. Meals and classes missed

No refunds or substitutions will be made for meals or classes missed due to public holidays, exams, excursions, internships (if applicable), first day orientation or other obligations that fall outside the normal schedule.

24. Inconsistent attendance

Any participant who does not attend all of the classes which make up the language course will not be entitled to any reimbursement for missed classes. Participants will not be entitled to receive their certificate for completing the course unless they attend at least 80% of the classes.

25. Complaints

We work hard to ensure that you receive the level of service that you require. However, there may be times when you are not completely happy with the level of service that you receive. All of the staff at Alpadia are available for you to talk to if you have any concerns and we promise to respond to your questions within 24 hours. If you are unhappy or dissatisfied with the service we provide, please follow the

steps listed below in order to seek a solution to the problem.

Step One

Teaching: If you have concerns or worries about your class or learning please talk to your teacher first. After talking to your teacher, if you are still unhappy, please speak to the Director of Studies.

Accommodation: If you have concerns regarding the accommodation service we provide then please talk to the Student Support Manager. Administration: If you are unhappy with the way your course has been administered e.g. payments, dates, then please speak to the Customer Care Manager.

Step Two

If you are not happy with the answer provided by these staff members, then please raise your concerns with the Centre Manager.

Final Step

If you are still not satisfied with our responses, then you may wish to raise your complaint with the professional organisation that accredits the school. The contact details are below:

Equals

29/30 Fitzroy Square,
London, W1T 6LQ,
United Kingdom

26. Changes affecting prices, dates or services

Until such time as a participant receives the confirmation of registration, Alpadia may change the dates and prices of language courses published on the internet, brochure or any other communication tools at any time. Following confirmation of registration between Alpadia and the participant, Alpadia may change its programme of services, provided that the changes are minor, unavoidable and do not in any way adversely impact the teaching services to be provided to the participant. In the event that the "key" services provided by Alpadia are affected by major changes, participants may withdraw or apply to join a different course of the same value, if Alpadia is in a position to provide this. Alpadia must notify participants of any changes immediately and participants must notify Alpadia as soon as possible after receipt of such notification of their intention to exercise their rights set out in this clause.

27. Minimum number of participants

In the event that it is not possible to achieve the minimum number of participants required for a language course (6 persons for a group course), Alpadia will notify the participant and contract partner at least one week prior to the commencement date of the course. If Alpadia is unable to provide an alternative course, Alpadia will undertake to reimburse all fees paid to date by the participant/contract partner. Under no circumstances will Alpadia pay compensation for any inconvenience or loss of time. In the event that none of the courses are appropriate for the participant's level of ability, Alpadia reserves the right to substitute the group course for private tuition and adapt the number of lessons accordingly. The number of hours of private tuition will depend on the amount paid by the participant and the number of participants.

28. Activities

Depending on the weather conditions or other circumstances beyond the control of Alpadia and its organisation, Alpadia reserves the right to cancel one or more of the scheduled activities available at each school. In that event, Alpadia undertakes to substitute the cancelled activities with a suitable alternative activity.

29. Public holidays

The contract partner acknowledges that schools are generally closed on local public holidays, and acknowledges that this will not give rise to any claim for compensation against Alpadia for missed lessons or otherwise.

30. Force majeure:

Alpadia shall not be in breach of these terms and conditions nor liable for delay in performing, or failure to perform, any of its obligations under this agreement if such delay or failure result from events, circumstances or causes beyond its reasonable control including but not limited to: fire, natural disaster; acts of government; failure of suppliers or sub-contractors; labour disputes or civil unrest; criminal, terrorist or threatened terrorist activities of any kind; pandemics and other public health emergencies; any negligent or wilful act or failure to act by any third party; or any other cause beyond the direct control of Alpadia (each a "Force Majeure Event").

Where any course is cancelled by Alpadia as a result of a Force Majeure Event, it is acknowledged that:

- Alpadia has the right to retain a pro-rated amount of any fees paid where services have been partially provided. Any fees retained will be proportionate to the services provided;
- Alpadia shall be entitled to deduct any irrecoverable fees it suffers from the amount of any refund, for example cancellation fees or similar;
- Alpadia shall have the right to provide a substitute course to the cancelled course, including online and virtual alternatives; and
- Any third party services procured by Alpadia on behalf of the participant, including but not limited to accommodation, transfers or insurance shall remain subject to the terms of

the respective provider's terms and Alpadia shall not be liable for such third party services or any act or omission of such third party.

31. Liability

To the extent permitted by law, the liability of Alpadia, its group companies, their directors, officers, employees, affiliates, agents and partners with respect to losses arising from negligence, breach of contract or otherwise will be limited in all circumstances to the full amount paid to Alpadia for the particular language course. Such companies and persons will in no circumstances have any liability for indirect or consequential losses or damages. Under no circumstances can Alpadia be held liable for any loss resulting from illness, accident or inconvenience caused by poor service provided by any agent appointed by Alpadia. Furthermore, Alpadia will not be responsible for the loss of any valuables, personal items, money, or other possessions unless such losses arise from the gross negligence of Alpadia.

32. Safety and security

Alpadia is authorised to take all reasonable action as required to ensure the well-being, safety and good health of the participants. Alpadia is also entitled to take all necessary measures to provide a participant with any appropriate medical care in the event of necessity. Any costs arising from such medical attention will be borne by the participant, or their parent/guardian if they are a minor. A written release/authorisation signed by a participant's parent or guardian will be required for minors.

33. Protection of personal data

Your privacy is important to us. It is important that you read our privacy policy which informs you about how we process your personal data. This can be found at: <https://www.alpadia.com/en/privacy/htm>.

34. Promotional material

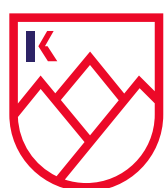
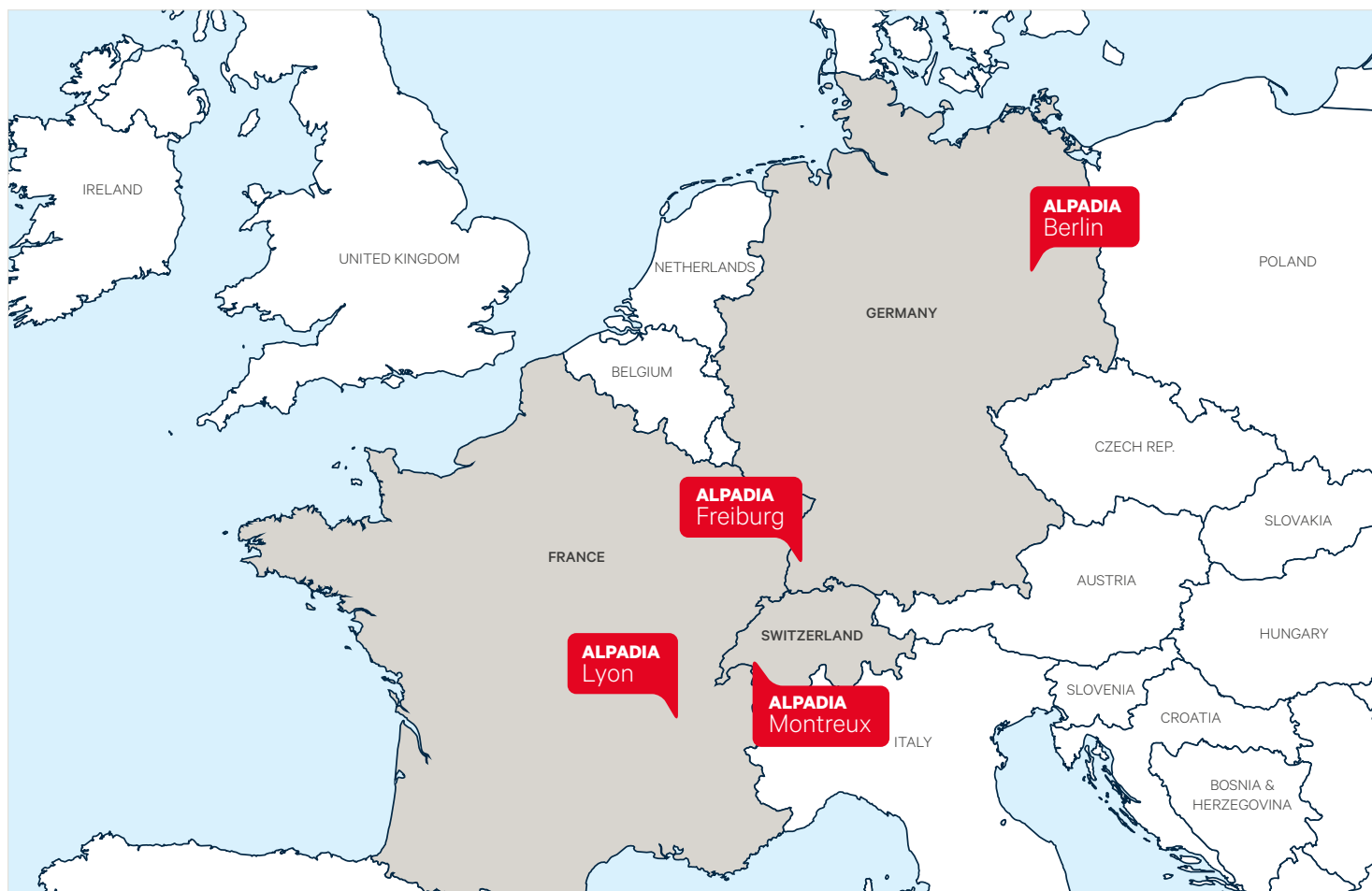
The participant (or where applicable, their parents or guardian) agrees that the participant's photographs, videos, artwork or other works as well as recorded or written testimonials and details of the participant's accomplishments may be used worldwide by Alpadia S.A., or by a third party agent of Alpadia S.A., for promotional purposes including in its printed and online marketing materials and on any social media network without further consent or notifications. Participants may be photographed and/or filmed during their language course with Alpadia S.A. and they agree to this material being used for Alpadia S.A. worldwide promotional purposes, both printed and online. The participant, or their parent or guardian, also agrees to give consent to Alpadia S.A. to store or transfer across international borders, copies of the participant's images, videos and testimonials solely for the promotional purposes outlined above. These terms and conditions will be deemed non-applicable only if the participant or their parent or guardian specifically withdraws their consent, in writing, at any time after registration.

35. Applicable law and jurisdiction

Swiss law will apply exclusively to the contractual relationship between Alpadia and the participant and/or contract partner. Jurisdiction will lie with the courts of Montreux, Switzerland.

36. General

As a member of the Kaplan group of companies, Alpadia is subject to laws imposed by various jurisdictions on conducting business with sanctioned parties and countries. It is our policy to fully comply with applicable sanction restrictions, including those imposed by the United States, United Kingdom, Switzerland and the European Union. While we are not prohibited from transacting with individuals with a connection to a sanctioned country, we need to ensure that no part of the transaction will be in contravention of US sanctions laws under a series of prescribed compliance checks, including verification as to source of funding and persons providing such funding, before any monies or services can be transacted.



ALPADIA
LANGUAGE SCHOOLS
by Kaplan International

KAPLAN INTERNATIONAL
LANGUAGES

We are a leading Swiss language education group based in Montreux, Switzerland.

Alpadia Language Schools by Kaplan International Languages offers year-round French and German courses in Switzerland, Germany and France for students 16+ and English, French and German language courses for juniors and teens in Switzerland, Germany, France and United Kingdom. Initially established in 1996, and now larger than ever, our mission is to encourage language development through immersion and to expand the horizons of our students, **to inspire their future.**

Accreditations & certifications



Follow us



Contact us

+41 21 621 88 88

info@alpadia.com

www.alpadia.com